

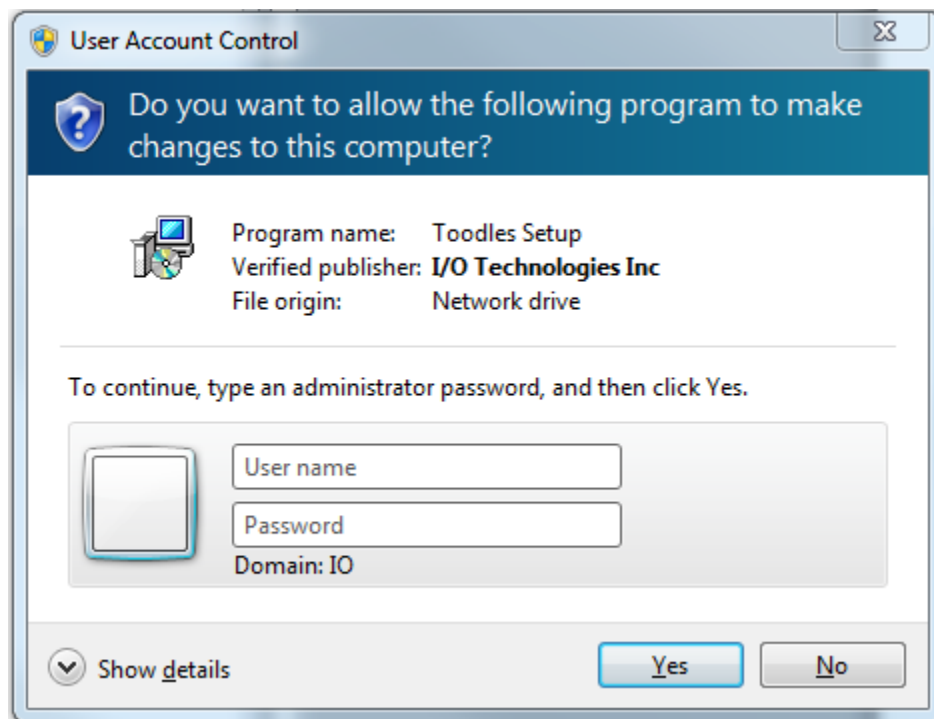
Installing Toodles!

Installing Toodles! on a standalone workstation

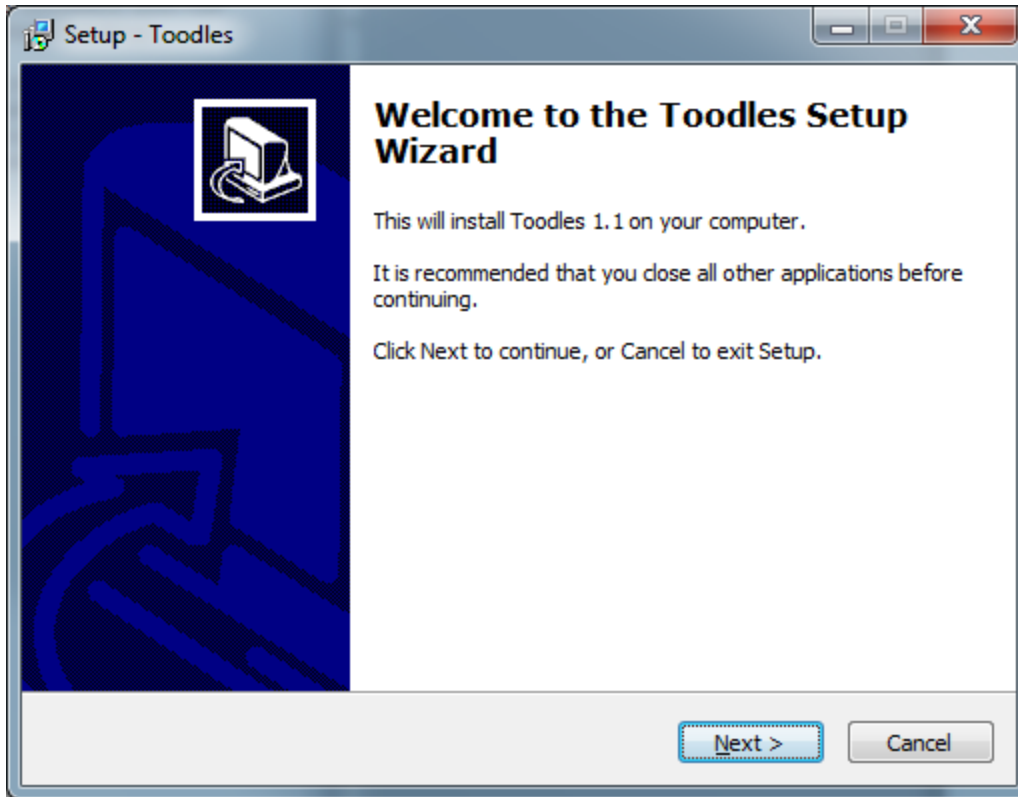
Follow these instructions if you intend to install the software on a single PC and other users won't need access to the same data files from other workstations on your network.

(If you want to configure the software so that other users can access the same data from workstations on a network, please follow the instructions in the [Installing Toodles! for Network Access](#) Section of this document.)

Download and launch ToodlesSetup.exe from a local drive. On Windows Vista and later versions of Windows, you'll be prompted for an Administrator login and password as soon as you launch the setup program. The dialog looks like this:



Then the following dialog will appear.



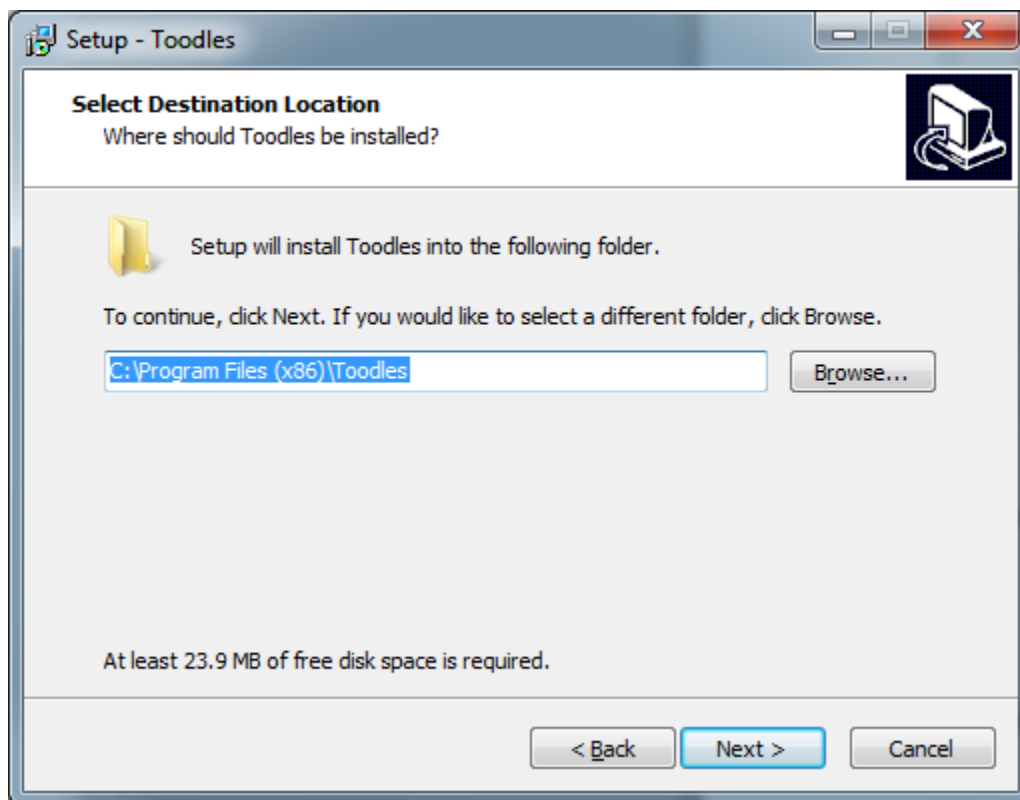
Press the Next button to continue to the End User License Agreement page:



Review the agreement by scrolling down to the bottom. If it meets with your approval, click the acceptance radio button. Then press Next.

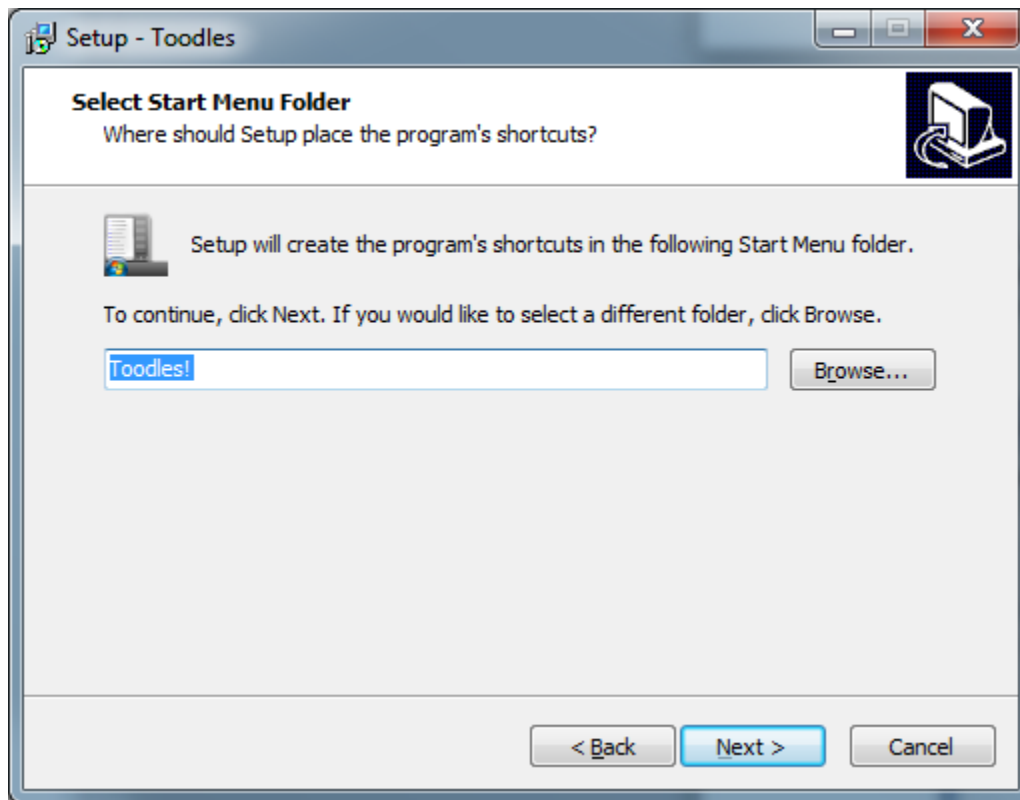
Because this application was written to accommodate multiple users, you can specify a target install folder.

- If you want to configure the software so that other users can access the same data from workstations across a network, please follow the instructions in the [Installing Toodles! for Network Access](#) Section of this document.
- If you will be installing this on a laptop or single workstation, feel free to accept the default:



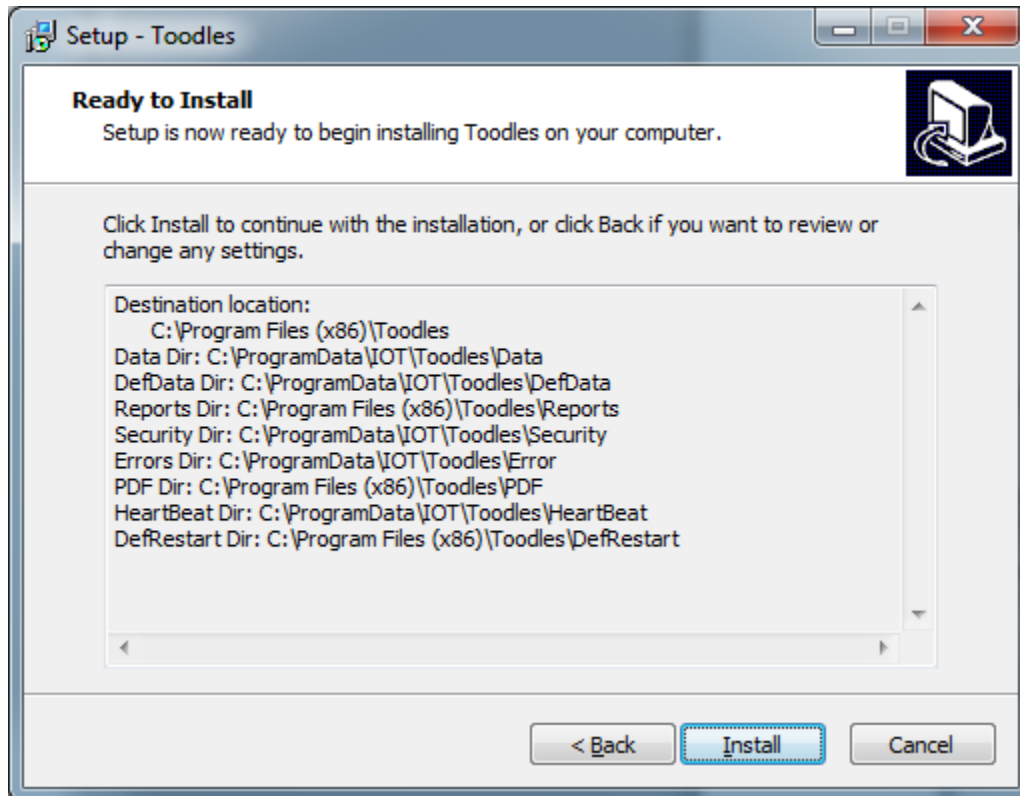
Press Next to continue.

The installer will automatically create a desktop shortcut, as well as create a shortcut in the computer's start menu. By default, it will create shortcuts in a new Toodles! folder in the start menu. If desired, you can specify a different folder by pressing the browse button.



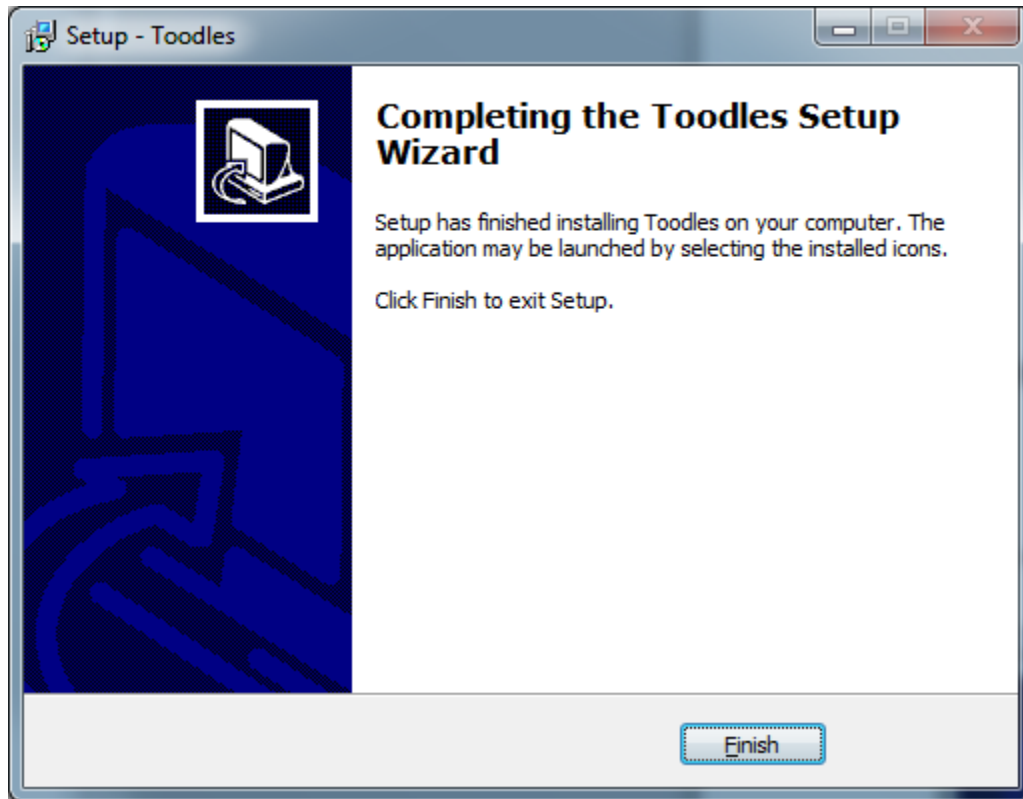
Press Next to continue.

The installer will display a list of folders that will be created.



Press the Install button to continue.

The installer will now create the necessary folders and files. When it has finished, the following dialog will appear.



Press the Finish button to complete the installation.

Installing Toodles! for Network Access

Follow these instructions if you want to install the software on a network, so that multiple users can access the same data from multiple workstations.

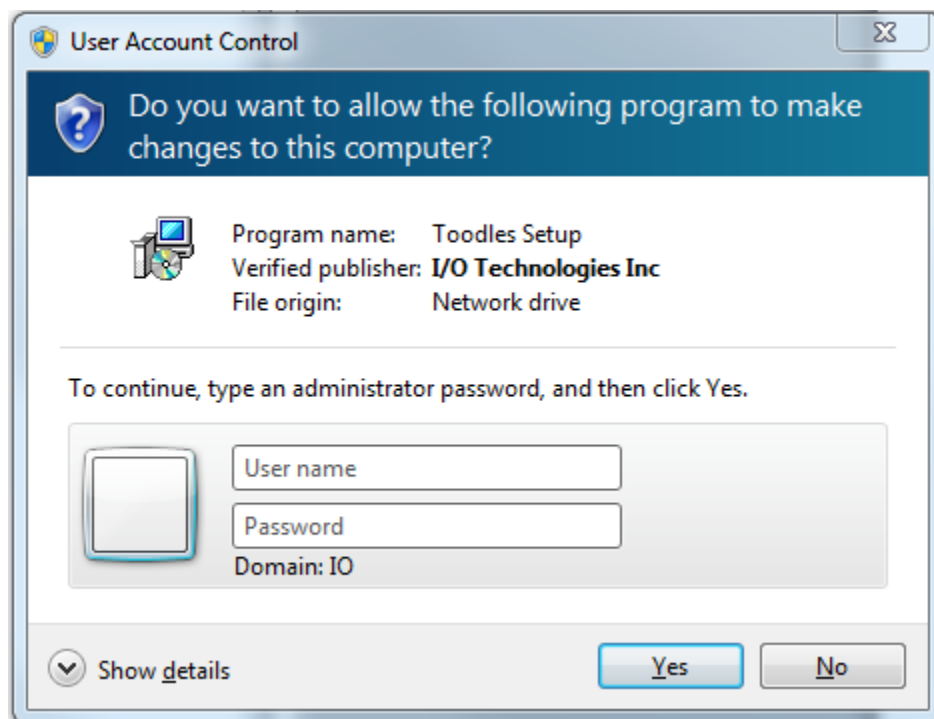
You must install the application directly on the server, logged in as Administrator. You can do so via Remote Desktop or other remote connectivity software; just be sure the installation runs on the server itself.

(If you want to install the application for a single user on a standalone workstation, please follow the instructions in the [Installing Toodles! on a standalone workstation](#) Section of this document.)

Toodles! can be installed on a peer-to-peer network, or file servers running Windows Server 2003 or higher. Linux and Mac environments are not supported.

Launch ToodlesSetup.exe from a local drive on the server. Depending on server version, you may be prompted for an Administrator login and password as soon as you launch the setup program.

The dialog will look something like this:



Then the following dialog will appear.

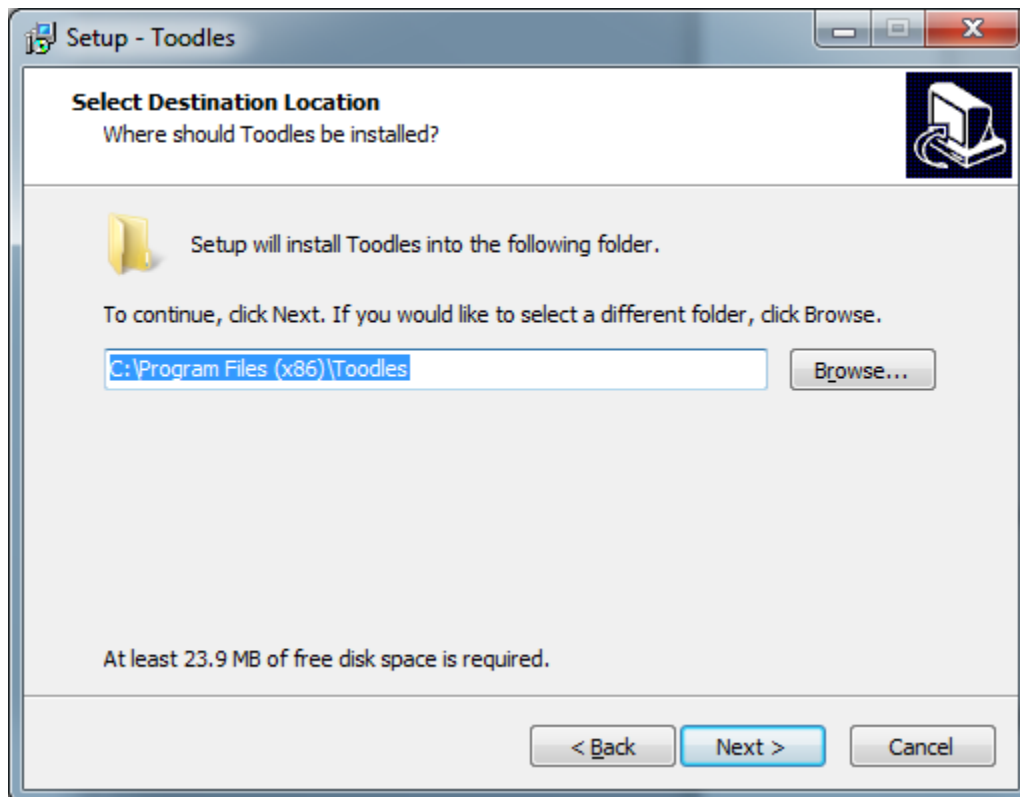


Press the Next button to continue to the End User License Agreement page:



Because this application was written to accommodate multiple users, you can specify a target install folder.

- If you want to configure the software so that other users can access the same data from workstations across a network, follow the instructions below.
- If you will be installing this on a laptop or single workstation, please follow the instructions in the [Installing Toodles! on a standalone workstation](#) Section of this document

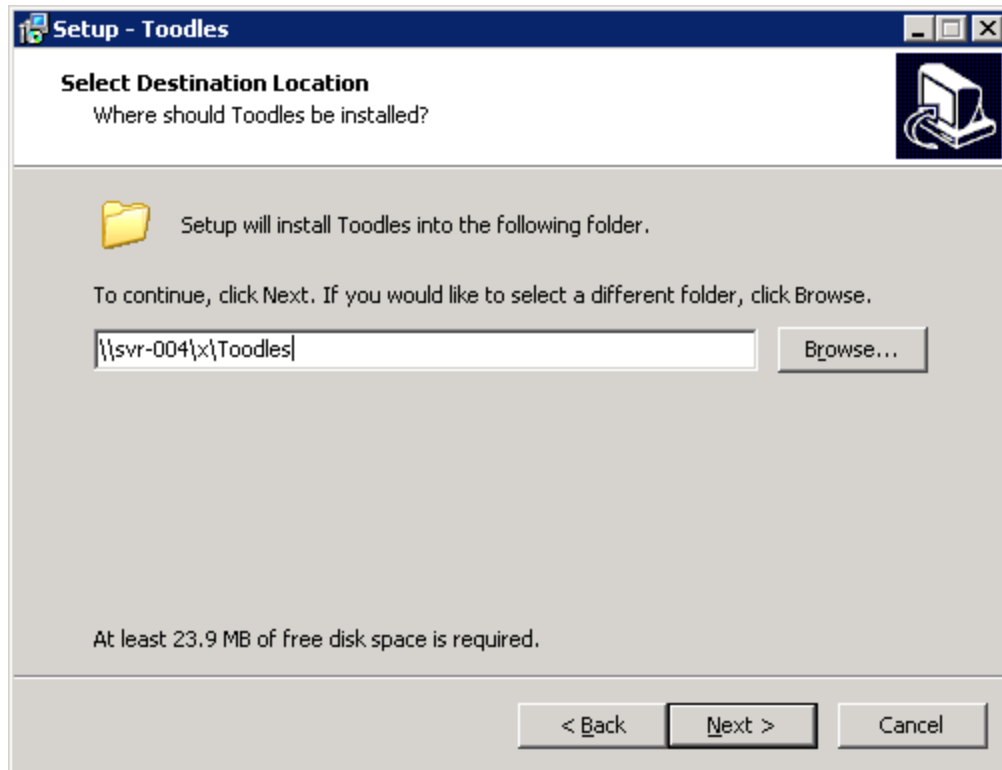


Note that while you *can* press the browse button in order to navigate to a desired folder, be sure to translate the selected path into a Universal Naming Convention (UNC), so users will be able to access the application from workstations across the network.

For example, rather than specifying `D:\apps\toodles`, you'll need to specify `\\OurServer\apps\toodles` here (replace `OurServer` with whatever your server name happens to be).

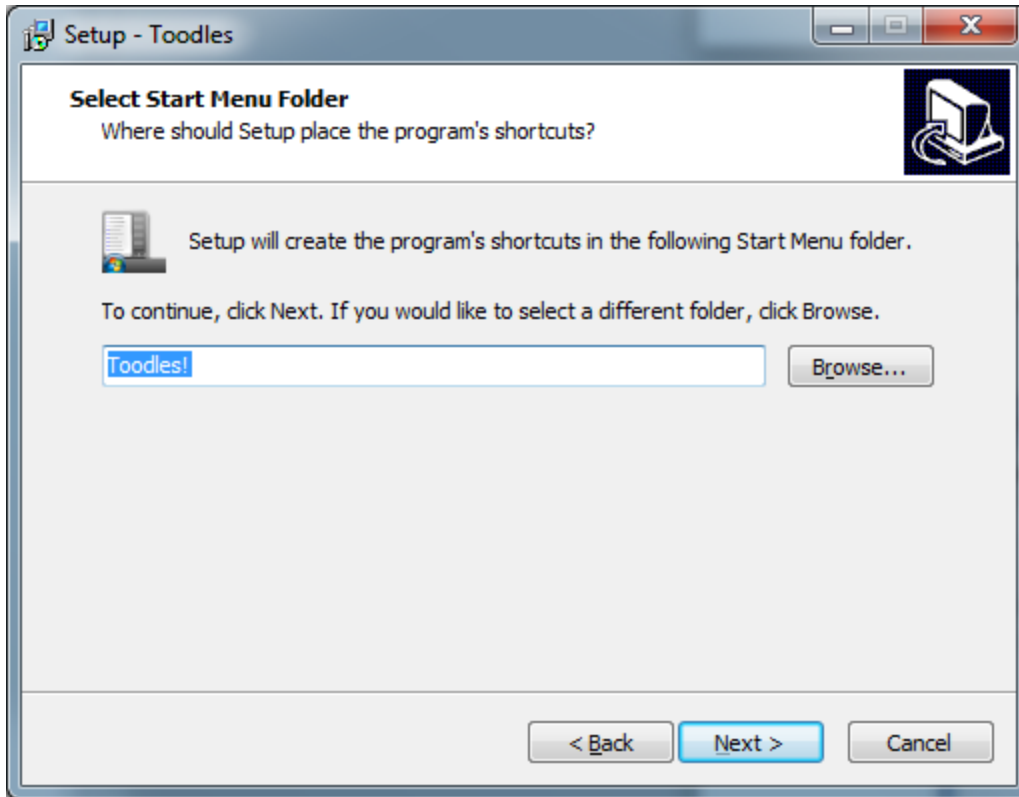
(If you fail to specify a UNC, the application will install just fine, but when users attempt to launch the software, their workstation will attempt to find the `d:\apps\toodles` folder locally, and fail.)

Here's an example of how this might look in a live environment:



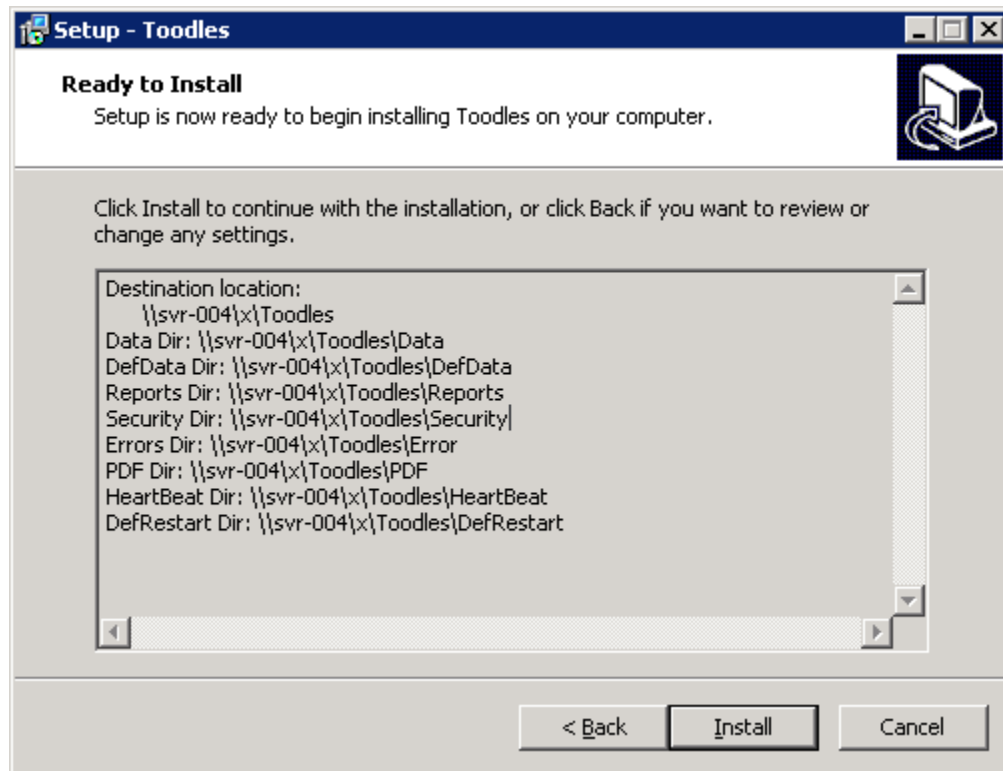
Press Next to continue.

The installer will automatically create a desktop shortcut, as well as create a shortcut in the server's start menu. By default, it will create shortcuts in a new Toodles! folder in the start menu. If desired, you can specify a different folder by pressing the browse button.



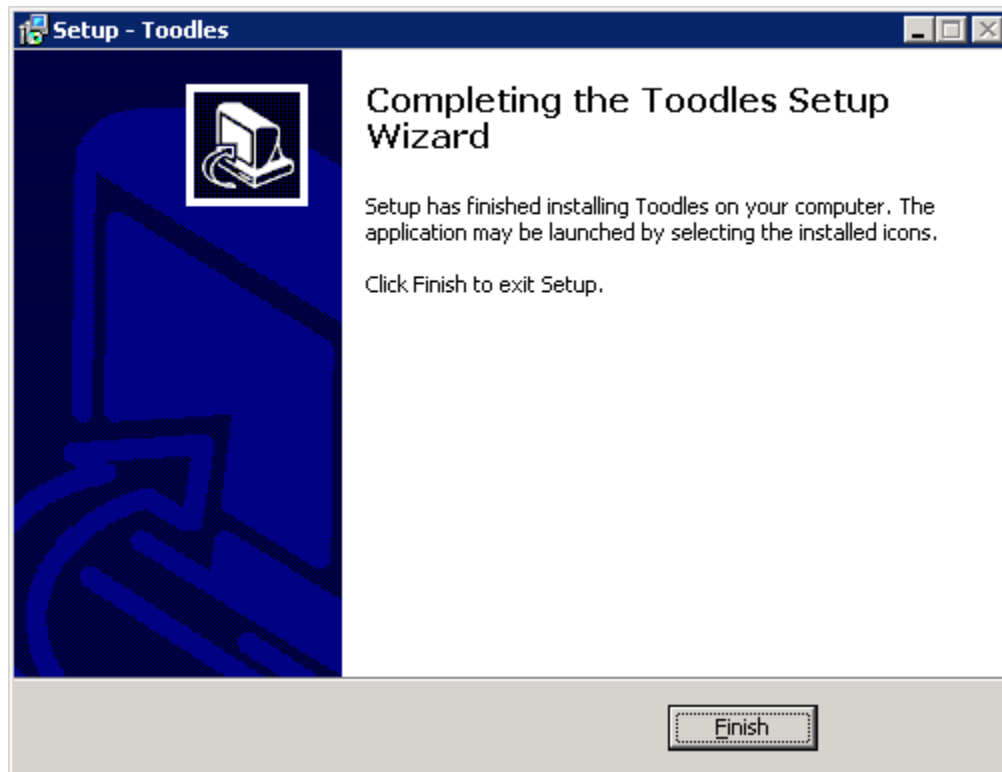
Press Next to continue.

The installer will display a list of folders that will be created.



Press the Install button to continue.

The installer will now create the necessary folders and files. When it has finished, the following dialog will appear.



Press the Finish button to complete the installation.

Launch Toodles! using the shortcut that was created on the server's desktop and register the application on the server.

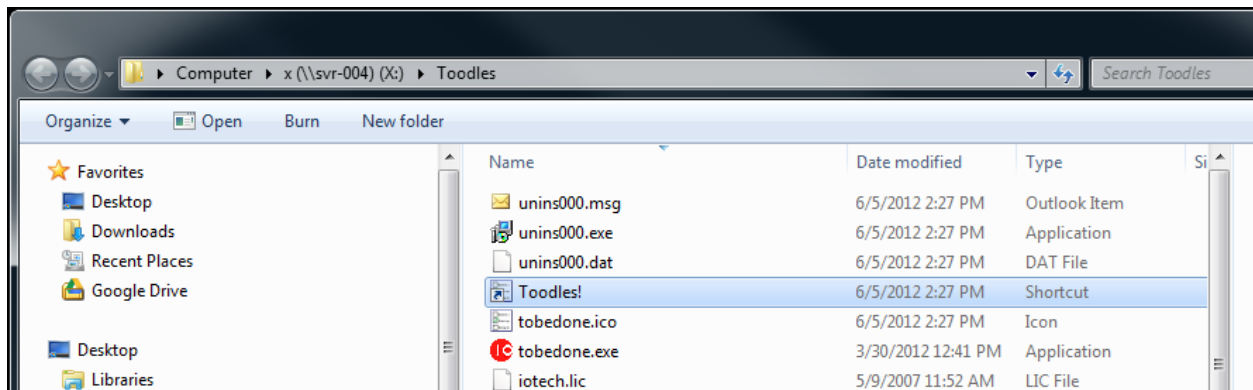
On workstations connected to the server...

Note: It is **not** necessary to run the installation program (ToodlesSetup.exe) on the workstations!

All you need to do is set up a shortcut that points to the launcher that was installed on the server during the previous steps.

Navigate to the folder where the application was installed (for example, if you elected to install to h:\apps\toodles, you would navigate to h:\apps\toodles.

You'll see a shortcut in the folder. In the screenshot below, it's the first red icon with the caption Toodles!.



Copy the shortcut to the local workstation's desktop.

When users double-click the shortcut, the launcher will automatically install the application the desktop, using the database tables on the network server.